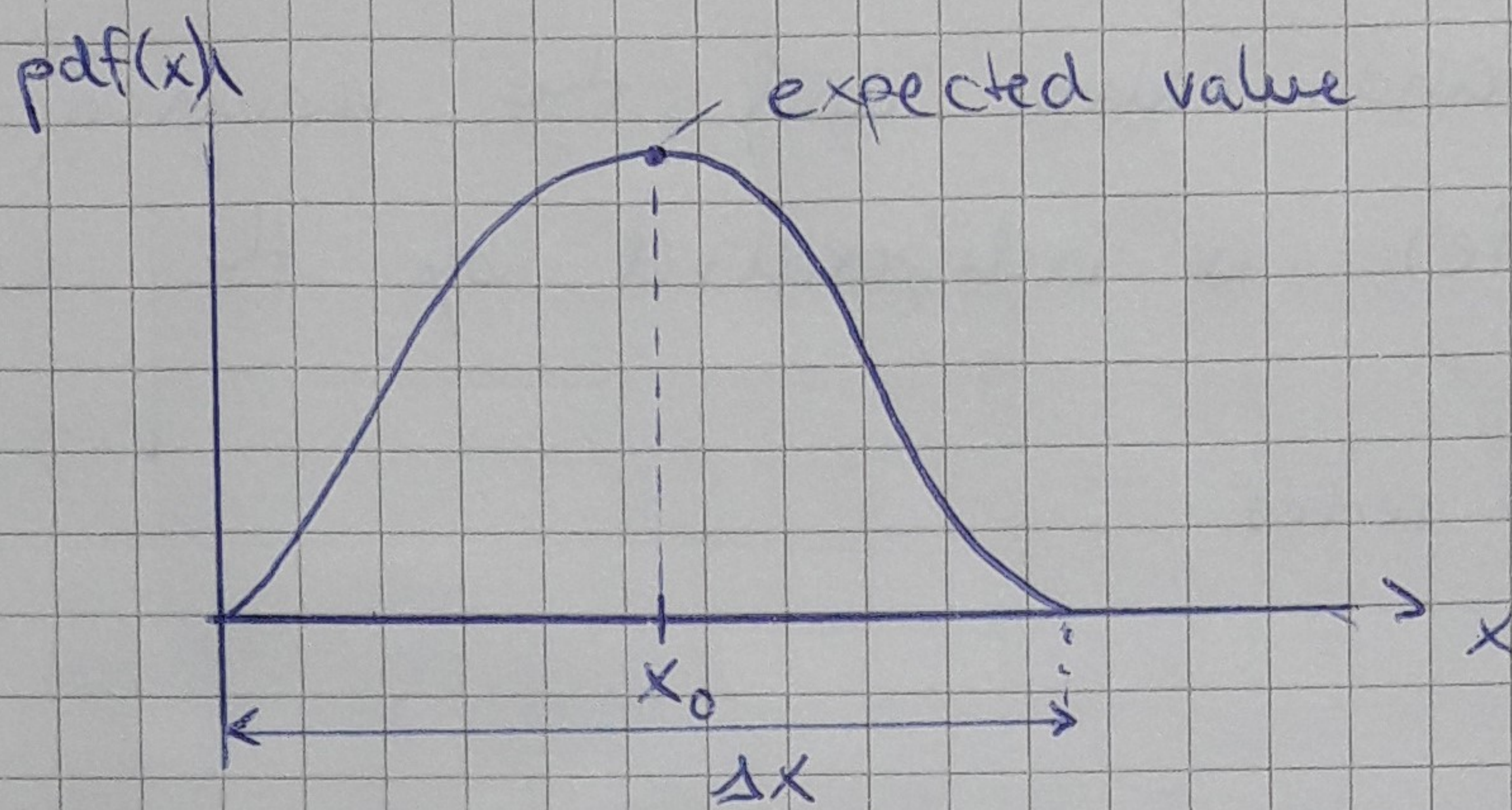


## ti pdf (time invariant probability density function)

pdf

- function that describes the probability that a ~~value~~ <sup>random</sup> variable accepts a value in the interval  $\Delta x$



## Ergodicity

- Condition of Ergodicity is stationarity
- statistical measures don't have to be calculated in connection with their ensemble, because they are already existing in one single realization

## ensemble

- number of all ~~of~~ realisations of a random process that are possible

## example:

- <sup>online</sup> dicing  $V$  with ten cubes and suggesting that the average value of the diced numbers is always the same

